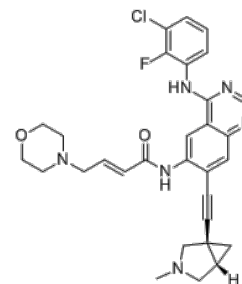


Product Name : BDTX-1535
Cat. No. : PC-21566
CAS No. : 2607829-38-7
Molecular Formula : C₃₀H₃₀ClFN₆O₂
Molecular Weight : 561.06
Target : EGFR
Solubility : 10 mM in DMSO



CAS: 2607829-38-7

Biological Activity

Silevertinib (BDTX-1535) is a 4th generation, irreversible, CNS penetrant, potent, wild type sparing **EGFR** inhibitor, targets a family of oncogenic EGFR extracellular domain alterations and amplification in GBM, and EGFR resistance mutations in NSCLC.

BDTX-1535 achieves potent anti-tumor activity against EGFR alterations and amplification across models including NSCLC and GBM PDX and intracranial tumors.

References

Matthew O'Connor, et al. **Cancer Res** (2023) 83 (7_Supplement): 3396.

Caution: Product has not been fully validated for medical applications. Lab Use Only!

E-mail: tech@probechem.com